

# Pro/INTRALINK® 9.1

## The Essential Tool for Workgroups Managing Pro/ENGINEER® Data

Pro/INTRALINK is the premier workgroup data management solution for the design process using Pro/ENGINEER.

Web-based, scalable, and easy-to-use, Pro/INTRALINK seamlessly manages all Pro/ENGINEER data relationships from conceptual sketches to 3D modeling to manufacturing.

Pro/INTRALINK simplifies Pro/ENGINEER data management activities during product development by transparently incorporating them into the design process. It not only accommodates the daily challenges of local design teams, but also accelerates the work of non-CAD users by providing easy access to information relevant to their role in the process.

Today, there's simply no better way to manage your Pro/ENGINEER data than Pro/INTRALINK.

### Key Benefits

#### Comprehensive Support for Pro/ENGINEER Advanced Features

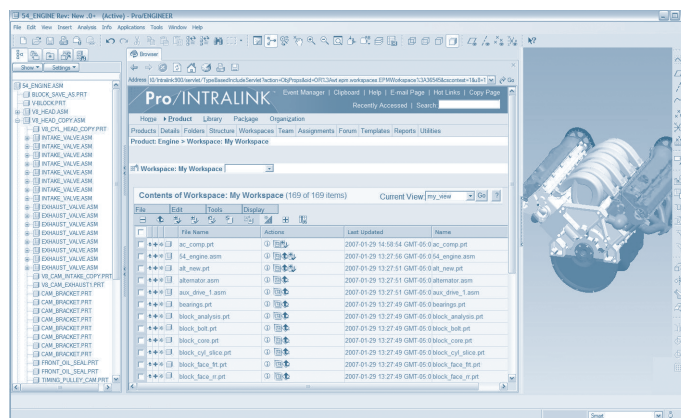
- Understands and supports all Pro/ENGINEER objects and relationships
- Provides reliable, continuous support for new and future Pro/ENGINEER modules

#### Improved Engineering Productivity

- Features a new Web-based architecture that speeds distributed product development
- Performs all data management activities directly within Pro/ENGINEER, improving engineering productivity

#### Superior Performance & Usability

- Fewer mouse clicks for common data management tasks
- Robust Local Area Network Performance
- Up to 5X greater WAN performance over previous generations of Pro/INTRALINK



Pro/INTRALINK is fully integrated with Pro/ENGINEER. All data management tasks are accessible from within the Pro/ENGINEER user environment, so engineers can spend more time on innovative product design and less time managing data.

#### Improved Productivity for Non-Engineering Roles

- Enables efficient Web access to data via standard browsers, with easy hyperlink navigation
- LDAP integration enables single user name and password sign on

#### Growth Potential

- Easily supports data management activities of large groups of users over geographically dispersed locations
- Easily upgradeable to Windchill® PDMLink™ for advanced enterprise data and process management
- Provides a direct path to the PTC Product Development System (PDS), enabling true global product development

#### Offline Data Storage

- Optional Windchill Archive and Restore module provides offline storage, freeing up computer resources for new product development

## Features and Specifications

### Comprehensive Workgroup Data Management Capabilities

- Track and store multiple versions/iterations of Pro/ENGINEER designs
- Manage all Pro/ENGINEER files and associations including family tables, assembly-part relationships, and external simplified representations
- Local working environment which is aware of designs being used by other engineers
- Define and advance the maturity of a design
- Vault non-Pro/ENGINEER files, and manage versions with ease
- Produce both baseline and 'as stored' configurations
- Create content replication distributed file vaults
- Access 'lightweight' graphical images of stored Pro/ENGINEER data
- Quickly search for product information managed by Pro/INTRALINK
- Produce comprehensive, accurate BOMs and relationship reports
- Integrate with Pro/ENGINEER Routed Systems Designer (RSD) to support wiring schematics
- Track local changes and undo unwanted modifications with workspace frames

### Integrated with Pro/ENGINEER User Environment

- All data management commands are accessible from within the Pro/ENGINEER embedded browser
- Supports drag-and-drop interactions such as checkout

### Modern Web-based Architecture

- Intuitive Web-based application powered by Windchill technology
- Access data instantly via standard Web browser
- Easy upgrade to Windchill PDMLink for enterprise data and process management

### Distributed Product Development

- Superior WAN performance and support for replicated file vaults
- Maintain system performance as user numbers increase, by leveraging resource redundancy, load balancing, and caching
- Improved security with multiple firewalls and security zones
- Improved cross-locale support for distributed product development
- Available for single-site or multi-site implementations

### Visualization

- Generate and preview thumbnail views of product models from within the Pro/ENGINEER embedded browser
- Optional ProductView™ module adds support for interactive 3D thumbnail views, server-enforced watermarks, and client-side viewable creation giving engineers and non-engineers alike fast access to product information

### Lifecycle Management

- Simple promotion process for advancing design maturity
- Define configuration rules for how content progresses in maturity and is managed
- Task notification integrated with corporate email

### Document Management

- Ability to define the types of documents such as specifications, requirements, and test results, and to specify different sets of attributes per document type
- Controls versions and iterations of all documents
- "Secondary content" can be added to Pro/ENGINEER data, providing a direct association for data that does not need to be independently lifecycle managed

### Reporting

- Create reports for model relationships, family tables, model structures, rename history, save-as history, location history, and difference reporting
- Create custom reports with available tools

### Data Administration

- Optional Archive and Restore capabilities integrated with purge, in a common user interface
- Provides archive status information and the ability to search archive indexes
- Seamless integration with existing LDAP server
- Optional Windchill Info\*Engine module supports SOAP, J2EE and WSDL Web Services Technologies to provide seamless data sharing between Pro/INTRALINK and enterprise applications

### System Specifications

- Pro/ENGINEER Wildfire 3.0 or later
- Microsoft Windows (32-bit and 64-bit): XP, Vista, 2003
- Unix (32-bit and 64-bit): Solaris, HP-UX, AIX
- Linux (64-bit): Red Hat Enterprise Linux 4
- Browser: Internet Explorer v 6.0 and newer
- Database: Oracle 10g and SQL Server 2005

### For More Information

Visit [www.PTC.com/support](http://www.PTC.com/support) for specific operating system levels and compilers.

The timing of any product release, including any features or functionality, is subject to change at PTC's discretion.

©2008, Parametric Technology Corporation (PTC). All rights reserved. Information described herein is furnished for informational use only, is subject to change without notice, and should not be construed as a guarantee, commitment, condition or offer by PTC. PTC, the PTC Logo, Pro/ENGINEER, and all PTC product names and logos are trademarks or registered trademarks of PTC and/or its subsidiaries in the United States and in other countries. All other product or company names are property of their respective owners.