

# Windchill® ProductPoint®

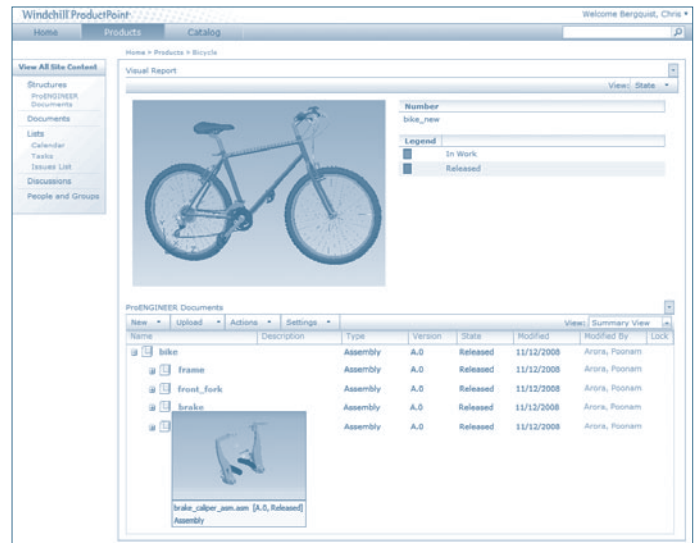
Unleash Microsoft® SharePoint® for Product Development

Through its understanding of structured information such as CAD files, engineering calculations and technical documentation, Windchill ProductPoint extends the capabilities of Microsoft's SharePoint technology.

Microsoft SharePoint is fast becoming a popular solution for simple, file-based collaboration across all industries. SharePoint not only is tightly integrated with the Microsoft Office® and Windows® environments, but it's also bundled with Windows Server. As Microsoft's collaboration infrastructure, SharePoint also offers a host of valuable social networking capabilities to better facilitate information sharing. SharePoint, however, has not been a sufficient technology solution for product development teams, which rely on rich authoring tools to create complex information assets, such as Pro/ENGINEER® and AutoCAD® files, technical documentation and engineering calculations. Windchill ProductPoint supports these rich authoring tools, includes robust visualization capabilities, and provides a purpose-built solution for product development teams.

## Key Benefits

- Quickly search and find the latest versions of the right files, driving greater team productivity
- Extend access to engineering content throughout the company, enabling more reuse and better decision-making
- Foster timely information sharing among team members through the use of SharePoint's Web 2.0 collaboration capabilities
- Get up and running quickly with a fast and easy deployment on top of an existing or new SharePoint Server, reducing total cost of ownership
- Adopt with a minimal learning curve, due to the familiar user interface and integrated environment



Windchill ProductPoint supports sharing, versioning, and viewing of multi CAD data

## Windchill ProductPoint supports a variety of usage scenarios:

For smaller companies who are currently using shared drives storing their rich product development data, Windchill ProductPoint helps teams to work concurrently, find the right files, and share product development data throughout the company. Additionally, smaller companies will benefit by using Windchill ProductPoint to collaborate and share rich data with customers using Windchill-based solutions.

For larger companies, especially those with SharePoint deployments, Windchill ProductPoint complements Windchill by extending product development information to broader teams, and by fostering supplier collaboration activities. Additionally, Windchill ProductPoint can be a valuable solution for those organizations conducting pure research or stealth projects, and which need an easily administered project environment disconnected from corporate systems.

And, with language localization, each site can be displayed in a customer's preferred language.

## Features<sup>1</sup>

### Quickly collaborate on product development information

- Web-based workspaces
- Announcements and alerts
- Discussion forums, blogs and wikis
- Task, calendar and Microsoft Office integration

### Easily access people, documents and information

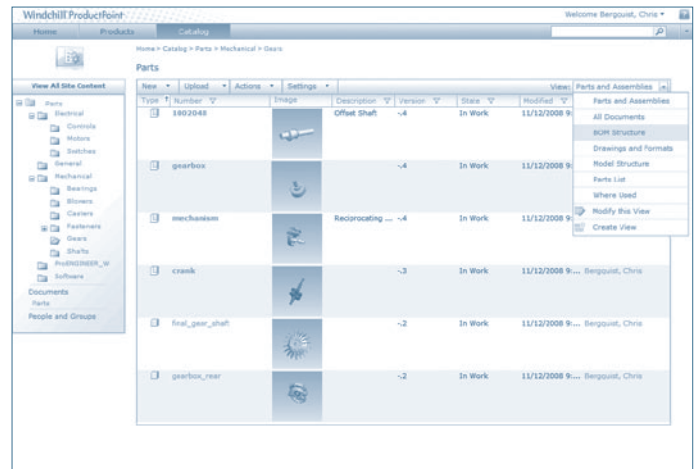
- Real-time presence detection and communication
- Additional community and social networking capabilities delivered with optional SharePoint Server Web Part
- Document collaboration
- Multi-CAD support (e.g., Pro/ENGINEER, AutoCAD)
- Lightweight 3D visualization
- Viewing and reporting of structured information (model structure and parts list, where used)
- Search (substring, wildcard)

### Easily author and handle documents

- Automatic lock and unlock
- View and restore past revisions
- Set document-specific security

### Windchill interoperability

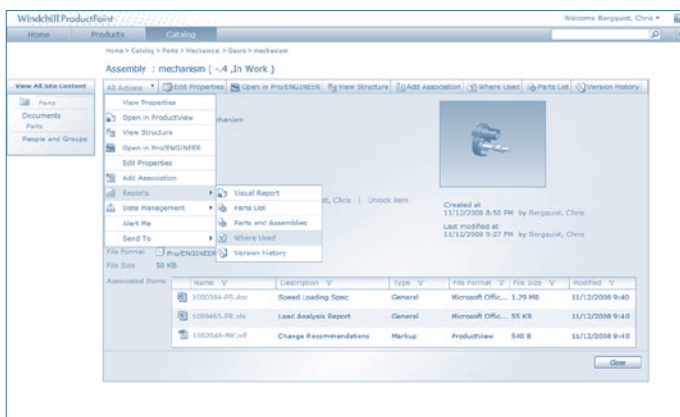
- Optional sharing of CAD data across Windchill ProductPoint and other Windchill systems<sup>2</sup>
- Optional support for presentation of Windchill information (e.g., task lists) within familiar SharePoint environment



A catalog of standard part designs in Windchill ProductPoint

### Platform and Language Support

- Client support:
  - Windows clients only
  - Pro/ENGINEER client must be Pro/ENGINEER Wildfire 4.0 M060 or later
- Server support:
  - Windows Server 2003
  - Windows SharePoint Services 3.0 (required, and included with Windows Server)
- Standard language support:
  - English, German, Italian, Spanish, French, Simplified Chinese, Traditional Chinese, Japanese, Korean
- Optional:
  - Custom language support



Windchill ProductPoint offers rich reporting capabilities, including Where Used, Version History, and a visual representation of file dependencies.

<sup>2</sup>Requires Windchill PLM Connector

<sup>3</sup>Requires Windchill Web Parts for SharePoint

<sup>1</sup>NOTE: Some features and capabilities are intended for future releases of Windchill ProductPoint. Future plans subject to change at PTC's discretion.

Copyright © 2008, Parametric Technology Corporation (PTC). All rights reserved. Information described herein is furnished for informational use only, is subject to change without notice, and should not be construed as a guarantee, commitment, condition or offer by PTC. PTC, the PTC logo, NetRegulus, NetRM and all PTC product names and logos are trademarks or registered trademarks of PTC and/or its subsidiaries in the United States and in other countries. All other product or company names are the property of their respective owners.